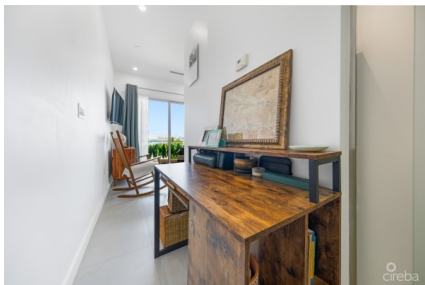


## STYLISH 1 BED AT HARBOUR WALK

Prospect / Newlands, Cayman Islands

MLS# 419849

**CI\$395,000**





**Sloane Rhulen**  
sloane@rhulens.com

This one-bedroom, one-bathroom condo offers 485 square feet of modern living space in a vibrant and convenient community. With an open layout, the interior feels spacious and bright, perfect for relaxing after a long day or entertaining friends. Step outside your door and discover a lifestyle packed with options. Head up to the rooftop pool to enjoy the sunshine and unparalleled, 360-degree views of Grand Cayman. Want to stay active? A running track and a fully-equipped gym next door make that easy. You'll also find plenty of dining choices right on-site, including a cozy cafe, local bakery, and delicious restaurants, with even more variety just next door. The building is designed with comfort and peace of mind in mind. There's 24-hour security, keyless entry, and a helpful reception area for deliveries. An elevator and welcoming lobby offer easy access to your home. You're just a short drive from the heart of George Town and the lively Seven Mile Corridor. Whether you're in the mood for shopping, dining, local attractions, or spending a day at the beach, you're close to it all. This condo combines modern living with everyday convenience in one great location. If you're looking for a stylish and easy-to-maintain space with everything you need just steps away, this could be the one. Reach out to schedule your viewing today!

Essential Information

|                        |        |        |              |
|------------------------|--------|--------|--------------|
| Type                   | Status | MLS    | Listing Type |
| Residential (For Sale) | New    | 419849 | Condominium  |

Key Details

|            |        |       |        |
|------------|--------|-------|--------|
| Bed        | Bath   | Block | Parcel |
| 1          | 1      | 22E   | 445H26 |
| Year Built | Sq.Ft. |       |        |
| 2023       | 485.00 |       |        |

Additional Features

|            |           |        |             |
|------------|-----------|--------|-------------|
| Block      | Den       | Parcel | Views       |
| 22E        | No        | 445H26 | Garden View |
| Foundation | Furnished | Den    | Garage      |
| Slab       | Yes       | No     | No          |