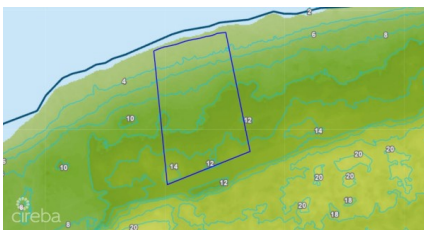


## OCEAN FRONT LOT LITTLE CAYMAN

Little Cayman (East), Cayman Islands

MLS# 419844

**CI\$450,000**



**Sloane Rhulen**  
sloane@rhulens.com

Located on the tranquil northeast end of Little Cayman, this beautiful 0.95-acre oceanfront lot offers the perfect opportunity to build your dream island home or investment property. Set in the serene and unspoiled area of Mary's Bay (also known as Betty's Bay), this property provides 150 feet of pristine sea frontage, where turquoise waters and cooling trade winds define the ultimate island lifestyle. With an elevated terrain reaching up to 14 feet above sea level, the lot offers both natural protection and stunning panoramic views of the Caribbean Sea. The site's generous 170-foot road frontage and 235-foot depth provide ample space and flexibility for design and landscaping. Little Cayman is known for its peaceful charm, world-class diving, and untouched natural beauty. With limited inventory currently available, this parcel represents a rare opportunity to own a substantial seafront property in one of the most desirable and private locations on the island. Priced attractively at CI \$450,000, this property is well-positioned below the current market average.

## Essential Information

Type <b>Land (For Sale)</b>	Status <b>New</b>	MLS <b>419844</b>	Listing Type <b>Little Cayman/Cayman Brac</b>
--------------------------------	----------------------	----------------------	--

## Key Details

Width <b>160.00</b>	Depth <b>235.00</b>	Block <b>91A</b>	Parcel <b>53</b>
------------------------	------------------------	---------------------	---------------------

## Additional Features

Block <b>91A</b>	Parcel <b>53</b>	Views <b>Beach Front</b>	Road Frontage <b>170</b>
---------------------	---------------------	-----------------------------	-----------------------------