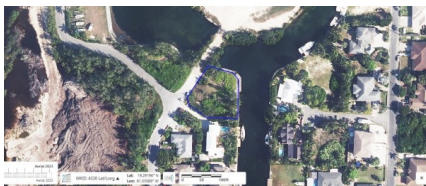


DOUBLE CANAL FRONTAGE OMEGA BAY LOT

Spotts, Cayman Islands

MLS# 419747

CI\$425,000



Sloane Rhulen
sloane@rhulens.com

Double Canal Frontage Omega Bay Lot at the end of Bay Island Avenue, situated opposite the junction with Roxborough Street. Close to Grand Harbour Shopping Complex & Harbour Walk with all the conveniences of cafe's, restaurants, grocery stores, and other retails stores.

Essential Information

Type
Land (For Sale)

Status
New

MLS
419747

Listing Type
Agriculture

Key Details

Width
185.00

Depth
154.00

Block
24E

Parcel
632

Additional Features

Block
24E

Parcel
632

Views
Canal View

Zoning
**Low Density
residential**

Sea Frontage
Yes

Road Frontage
30