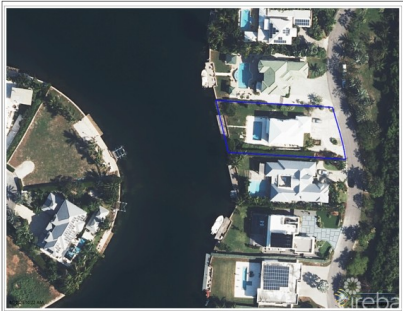


## BIMIN DR - EXECUTIVE CANAL FRONT HOME IN GRAND HARBOUR

Prospect / Newlands, Cayman Islands

MLS# 419660

**CI\$2,199,999**





**Sloane Rhulen**  
sloane@rhulens.com

Discover luxury living in this stand-alone executive canal-front home, located in the prestigious gated community of Grand Harbour. Designed for comfort and privacy, this immaculate property sits on a mature, fully fenced lot of over 1/3 acre, offering the perfect blend of space, security, and style. Boasting 4 spacious bedrooms and 3.5 bathrooms, this residence features an open-concept layout, double car garage, and a private pool — perfect for entertaining or unwinding in your own tropical oasis. Enjoy direct canal access with your own private dock, ideal for boating enthusiasts or those seeking true waterfront living. The property is tucked within one of Cayman’s most secure and exclusive neighborhoods, just minutes from top-rated schools, the Shops at Grand Harbour, Harbour Walk, fine dining, wellness centers, and more. Property Highlights: 4 Bedrooms | 3.5 Bathrooms Over 1/3 Acre | Fully Fenced | Mature Landscaping Canal Front with Private Dock Private Pool & Outdoor Living Space Double Car Garage Gated Community with 24/7 Security Close to Schools, Shopping, Dining & Entertainment This is island living at its finest so don’t miss out and contact us today to arrange your private viewing.

Essential Information

Type	Status	MLS	Listing Type
Residential (For Sale)	New	419660	Single Family Home

Key Details

Bed	Bath	Block	Parcel
4	3.5	22E	288
Year Built	Sq.Ft.		
2013	3959.00		

Additional Features

Block	Den	Lot Size	Parcel
22E	No	0.35	288
Views	Sea Frontage	Foundation	Furnished
Canal Front	85	Slab	Partially
Den	Garage	Zoning	
Yes	2	Low Density residential	