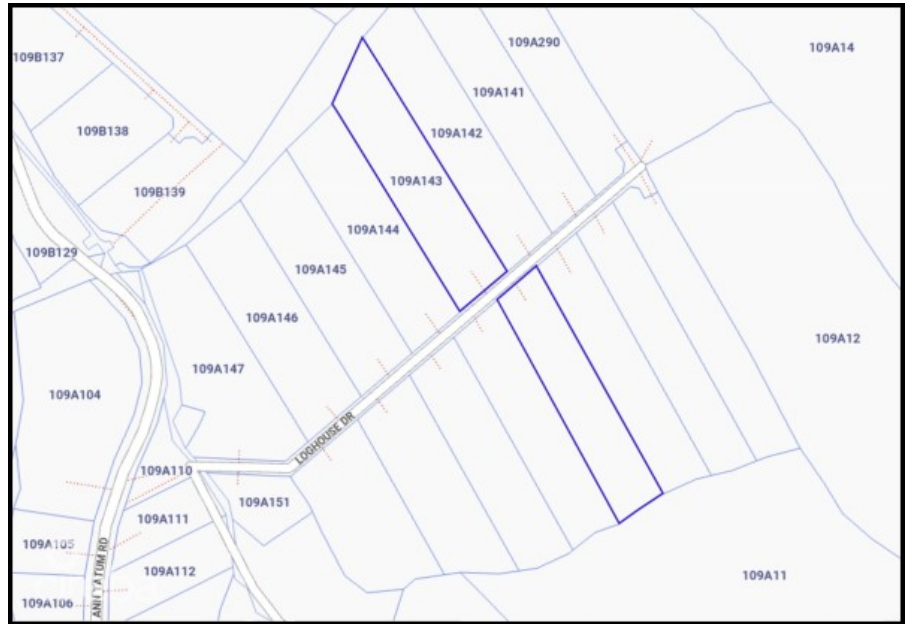


CAYMAN BRAC LOGHOUSE DRIVE 2.74 ACRES

Cayman Brac East, Cayman Islands

MLS# 419632

CI\$215,000



Sloane Rhulen
sloane@rhulens.com

Situated on the coveted Bluff Edge of Cayman Brac's peaceful Eastern side, this rare 2.74-acre parcel offers exceptional privacy and captivating beauty. Perched over 110 feet above sea level, the property commands breathtaking, uninterrupted views of the shimmering Caribbean Sea. Its elevated position captures cooling breezes and showcases some of the island's most spectacular sunsets. With its expansive size, seclusion, and sought-after Bluff Edge location, this is the perfect site for a private estate, luxury villa, or investment in one of the Cayman Islands' most dramatic landscapes.

Essential Information

Type	Status	MLS	Listing Type
Land (For Sale)	New	419632	Agriculture

Key Details

Width	Depth	Block	Parcel
230.00	1025.00	109A	143

Additional Features

Block
109A

Parcel
143

Views
Water View

Zoning
Agriculture/Residential

Road Frontage
230

Soil
Rock