



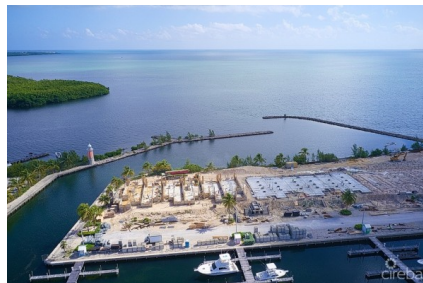
5 Bay Harbour Centre, West Bay Road, Grand Cayman  
+1 (345) 938-1000  
info@rhulens.com |

## CATALINA BAY SECOND FLOOR CORNER

George Town East, Cayman Islands

MLS# 416324

**US\$1,990,000**



**Sloane Rhulen**  
sloane@rhulens.com

Enjoy it all at Catalina Bay! With a beachfront area on one side, a tranquil cove on another and a total of 800 ft of sea frontage Catalina Bay is a water-lover and boaters paradise! Designed with the highest energy efficient standards, Unit #201, is a second floor corner unit with 3 bedrooms, 3.5 bathrooms, kitchen and living area, and gorgeous covered patios and balconies. The most amazing features of this condo are its voluminous 10 foot ceilings and the spectacular, uninterrupted water views of the North Sound. Catalina Bay will enjoy exclusive amenities such as a beachfront area, 170 feet pool and kid's pool and play zone, jacuzzi, outdoor cabanas, clubhouse with outdoor kitchen and well appointed gym, amongst others. Conveniently located steps away from George Town Yacht Club, Catalina Bay will also enjoy the Yacht Club and Barcadere Marina facilities. The project is under way with an expected completion date of late 2024/2025.

Essential Information

|                        |                    |        |              |
|------------------------|--------------------|--------|--------------|
| Type                   | Status             | MLS    | Listing Type |
| Residential (For Sale) | Back On The Market | 416324 | Condominium  |

Key Details

|            |         |       |          |
|------------|---------|-------|----------|
| Bed        | Bath    | Block | Parcel   |
| 3          | 3.5     | 20C   | 177H201A |
| Year Built | Sq.Ft.  |       |          |
| 2023       | 2048.00 |       |          |

Additional Features

|              |            |             |                          |
|--------------|------------|-------------|--------------------------|
| Block        | Den        | Parcel      | Views                    |
| 20C          | No         | 177H201A    | Canal Front, Water Front |
| Sea Frontage | Foundation | Floor Level | Furnished                |
| 800          | Slab       | 1           | No                       |
| Den          |            |             |                          |
| No           |            |             |                          |