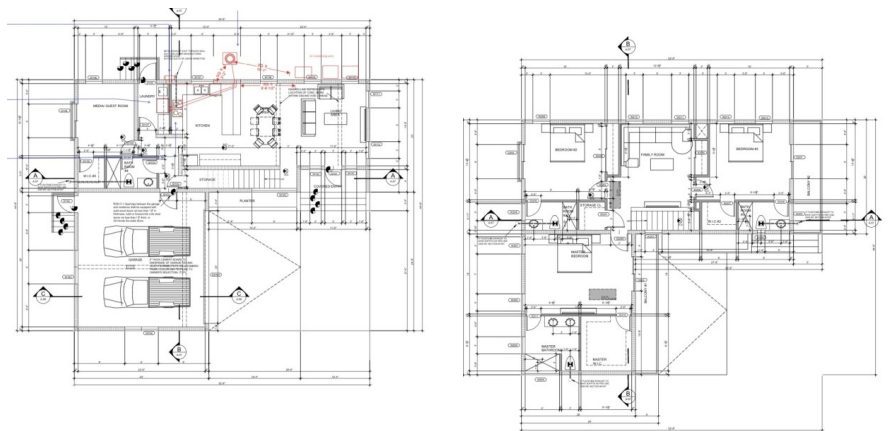
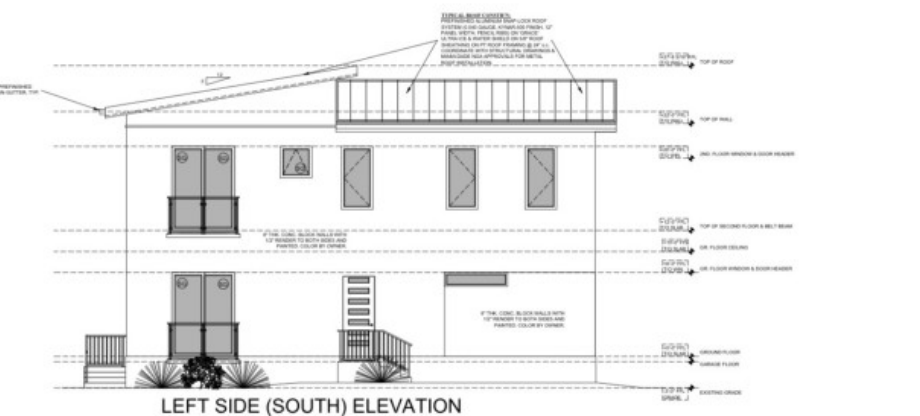


CI\$250,000





Sloane Rhulen
sloane@rhulens.com

Discover the potential of this exceptional land nestled within the secure confines of Stonebridge, an esteemed gated community. With contemporary residences and essential utilities at your fingertips, this is the canvas for your architectural dreams. The groundwork is laid for your dream home, boasting a solid foundation, approved plans, and seamlessly integrated water and electrical systems. Enjoy modern living in a serene setting, with community amenities and peace of mind security. Seize this rare opportunity to sculpt your ideal haven in the heart of a sought-after location. Embark on a journey of architectural ingenuity and create the masterpiece you've always envisioned. Agent owned. Approved architectural plans included.

Essential Information

Type	Status	MLS	Listing Type
Land (For Sale)	Current	419517	Agriculture

Key Details

Width	Depth	Block	Parcel
98.86	81.83	28C	26REM1H20

Additional Features

Block	Parcel	Views	Zoning
28C	26REM1H20	Garden View	Low Density residential
Road Frontage	Soil		
16	Other		