



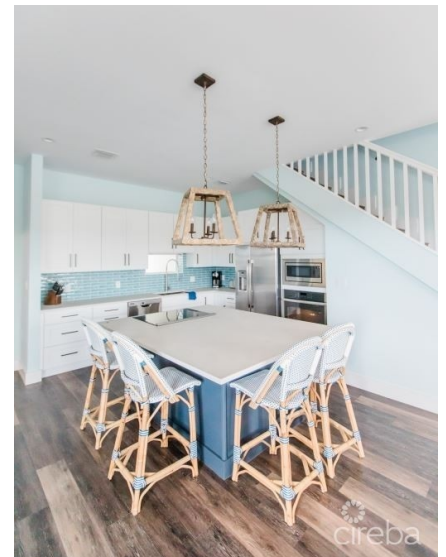
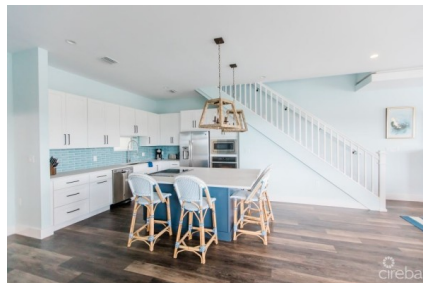
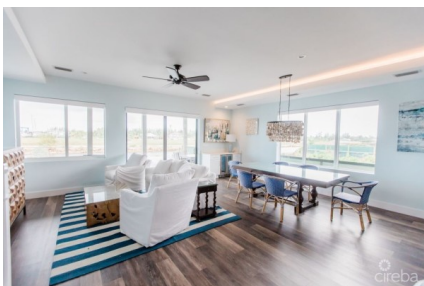
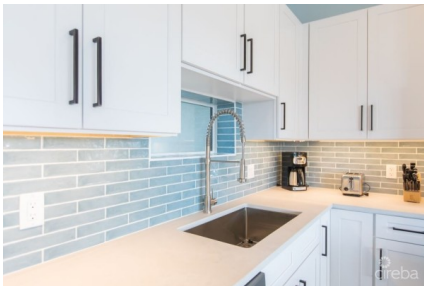
5 Bay Harbour Centre, West Bay Road, Grand Cayman
+1 (345) 938-1000
info@rhulens.com |

SEAHAVEN ORCHID VILLA

Spotts, Cayman Islands

MLS# 419232

US\$1,499,000





Sloane Rhulen
sloane@rhulens.com

Experience elevated coastal living in this exquisite 2 bedroom, 2.5 bathroom contemporary villa, spanning 2543 sq feet of thoughtfully designed elegance. Located in the private SeaHaven community along the serene North Sound coastline, this exceptional residence sits directly on a pristine, navigable waterway. Enjoy the ultimate waterfront lifestyle with your own private 30-foot boat dock, offering seamless access to the open water. Inside, refined comfort meets modern convenience. A private internal elevator conveniently leads to the second level bedroom suites. The waterfront master retreat impresses with sweeping views, a spacious custom walk-in closet, and a spa-inspired en-suite featuring a soaking tub, walk-in shower and sit down vanity. The second bedroom includes its on en-suite bath, perfect for guests or family. The open-concept kitchen, dining and living area is flooded with natural light and complemented by tasteful designer furnishings, creating a chic yet inviting atmosphere. A built-in office nook provides a dedicated space for remote work, while a full laundry room and one-car garage add everyday practicality. Step outside to the poolside covered patio, ideal for entertaining or unwinding by the water. Enjoy your private pool with integrated swim spa jets, or ascend to the spectacular rooftop terrace for panoramic views of the North Sound and surrounding waterways. Tucked away in a quiet, dead-end enclave, this villa offers a private sanctuary just 10 minutes from upscale shopping, fine dining and all the conveniences of island life

Essential Information

Type	Status	MLS	Listing Type
Residential (For Sale)	Current	419232	Semi-Detached/Duplex/Triplex

Key Details

Bed	Bath	Block	Parcel
2	2.5	24E	653H19/H9
Year Built	Sq.Ft.		
2020	2543.00		

Additional Features

Block	Den	Parcel	Views
24E	No	653H19/H9	Canal Front
Sea Frontage	Foundation	Floor Level	Furnished
100	Slab	1	Yes
Den	Garage		
No	1		