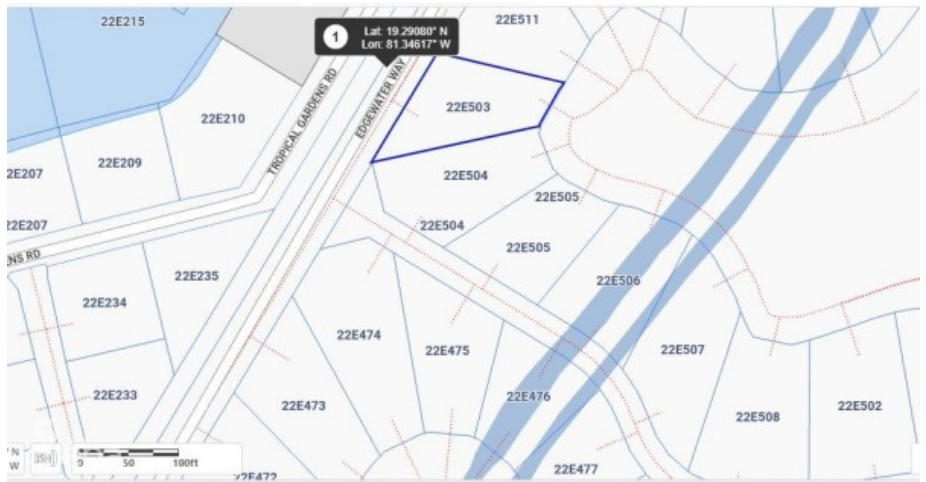


HARBOUR REACH

Prospect / Newlands, Cayman Islands

MLS# 419227

CI\$495,000





Sloane Rhulen
sloane@rhulens.com

Prime location, in a sought-after community on the canal, in a serene environment under CI 500K, sounds like paradise & It Is paradise. Canal view house lot in the prestigious Harbour Reach community in Grand Harbour. Harbour Reach is Canal lot community with direct access to the North Sound with a cantilevered 40 foot dock, this and these lots are all filled with compacted aggregate and safety retained by a keystone seawall which means there is no need for the added expense of pilings. Harbour Reach offers a 24-7 manned gatehouse with strong covenants to ensure high standards and quality upliftment of this beautifully landscaped community conveniently located within walking distance of Harbour Walk complex & Grand Harbour Shopping Complex with restaurants, café, Hurleys supermarket. Agent Owned

Essential Information

Type	Status	MLS	Listing Type
Land (For Sale)	Current	419227	Agriculture

Key Details

Width	Depth	Block	Parcel
95.00	135.00	22E	503A

Additional Features

Block	Parcel	Views	Zoning
22E	503A	Canal View	Low Density residential

Road Frontage
No