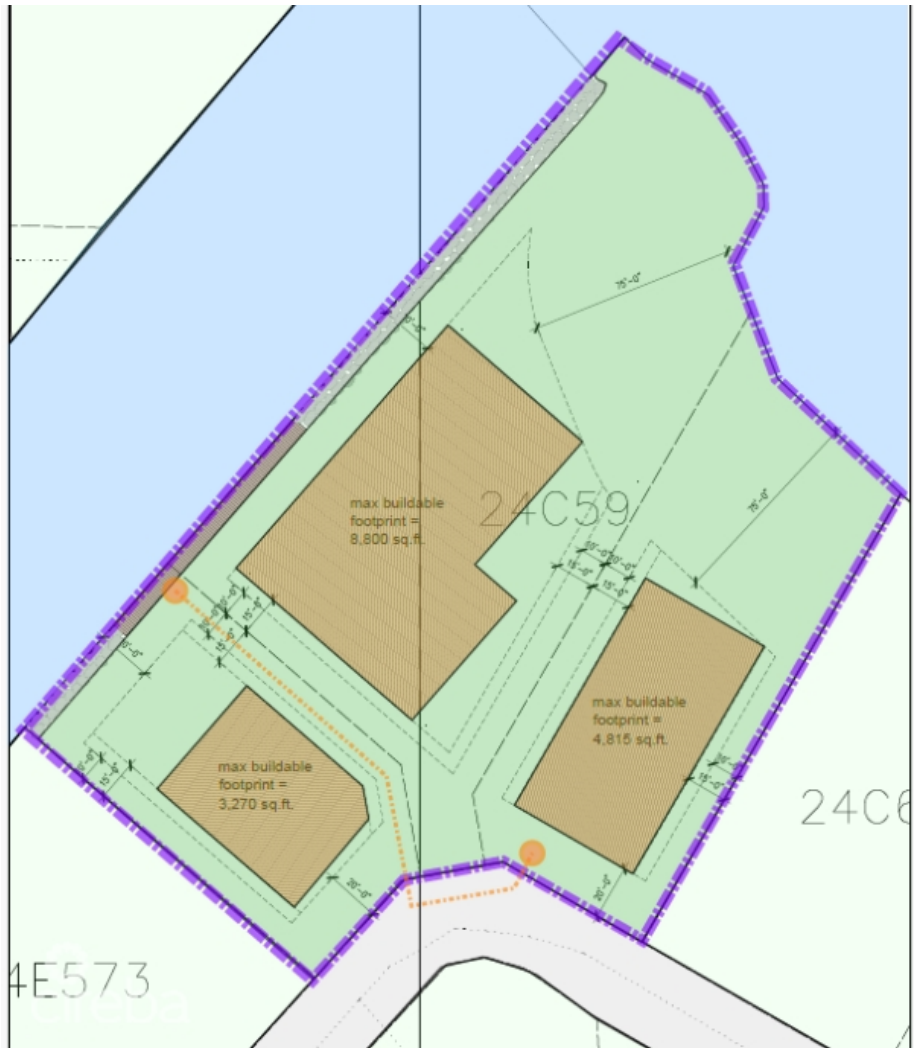
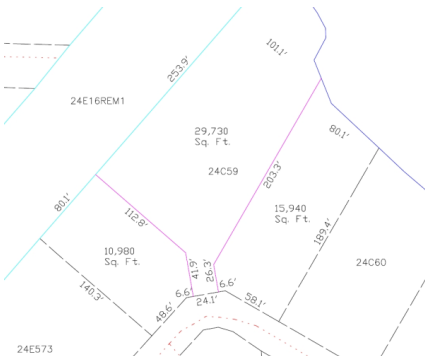


PATRICK'S ISLAND 0.25 ACRES, CANAL FRONT PARCEL

Spotts, Cayman Islands

MLS# 419184

CI\$349,000



Sloane Rhulen
sloane@rhulens.com

Situated in the prestigious gated community of Patrick's Island, this canal-front parcel presents an exceptional opportunity to embrace the ultimate boating lifestyle at superb value. With effortless access to the North Sound and peaceful water views, this parcel is a competitively priced home-site for your dream waterfront residence. Subdivision pending, and part agent-owned.

Essential Information

Type Land (For Sale)	Status Current	MLS 419184	Listing Type Agriculture
--------------------------------	--------------------------	----------------------	------------------------------------

Key Details

Width 80.00	Depth 140.00	Block 24C	Parcel 59LOT1
-----------------------	------------------------	---------------------	-------------------------

Additional Features

Block 24C	Parcel 59LOT1	Views Water Front	Zoning Low Density residential
Sea Frontage 80	Road Frontage 40	Soil Other	