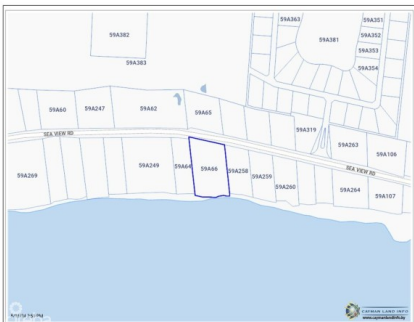


## EXCLUSIVE BEACHFRONT ESTATE PARCEL ON FRANK SOUND - 200 FT OF PRISTINE BEACHFRONT!

Midland East, Cayman Islands

MLS# 418325

**CI\$1,850,000**



**Sloane Rhulen**  
sloane@rhulens.com

This expansive beachfront estate parcel on Frank Sound offers 200 ft of stunning shoreline with a generous 300 ft depth extending to the main road. Whether you envision a luxurious estate home or a 30-bedroom condo complex, this prime piece of land provides ample space for development, while ensuring complete privacy. Utilities, including city water and electricity, are readily accessible from the main road, making the building process smooth and convenient. Located in a tranquil and environmentally protected area, this parcel offers incredible snorkelling right at your doorstep, surrounded by the unspoiled beauty of Frank Sound. Perfect for those seeking peace, privacy, and a unique development opportunity off the beaten path.

### Essential Information

Type	Status	MLS	Listing Type
<b>Land (For Sale)</b>	<b>Current</b>	<b>418325</b>	<b>Agriculture</b>

Key Details

Width	Depth	Block	Parcel
200.00	300.00	59A	66

Additional Features

Block	Parcel	Views	Zoning
59A	66	Beach Front	Low Density residential
Sea Frontage	Road Frontage	Soil	
198	200	Sand	