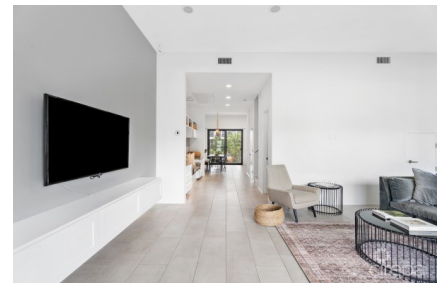


## VELA 15, SOUTH SOUND TOWNHOME

South Sound, Cayman Islands

MLS# 418302

**CI\$995,000**



**Sloane Rhulen**  
sloane@rhulens.com

Welcome to Vela 15, a bright and spacious 4-bed, 2.5-bath townhome with everything your family needs. This well-kept home offers ample storage, an open kitchen with a large pantry, gas appliances, and is fully furnished with high-end pieces. There's also the option to add another full bathroom for extra convenience. Enjoy outdoor living with a ground-floor patio with a retractable screen, a private balcony off the master bedroom, and another patio from the top-floor bedroom. Located in the family-friendly South Sound, you'll be close to schools, Grand Harbour, Harbour Walk, and George Town. VELA offers top-notch amenities including Olympic-sized pools, lush landscaping, a gated community, two tennis courts, two fitness centers, a clubhouse, and optional storage rentals.

## Essential Information

|                                       |                          |                      |                                    |
|---------------------------------------|--------------------------|----------------------|------------------------------------|
| Type<br><b>Residential (For Sale)</b> | Status<br><b>Current</b> | MLS<br><b>418302</b> | Listing Type<br><b>Condominium</b> |
|---------------------------------------|--------------------------|----------------------|------------------------------------|

Key Details

|                           |                          |                     |                         |
|---------------------------|--------------------------|---------------------|-------------------------|
| Bed<br><b>4</b>           | Bath<br><b>2.5</b>       | Block<br><b>21B</b> | Parcel<br><b>121H15</b> |
| Year Built<br><b>2018</b> | Sq.Ft.<br><b>2650.00</b> |                     |                         |

Additional Features

|                           |                         |                         |                           |
|---------------------------|-------------------------|-------------------------|---------------------------|
| Block<br><b>21B</b>       | Den<br><b>No</b>        | Parcel<br><b>121H15</b> | Views<br><b>Pool View</b> |
| Foundation<br><b>Slab</b> | Floor Level<br><b>1</b> | Furnished<br><b>Yes</b> | Den<br><b>No</b>          |
| Garage<br><b>No</b>       |                         |                         |                           |