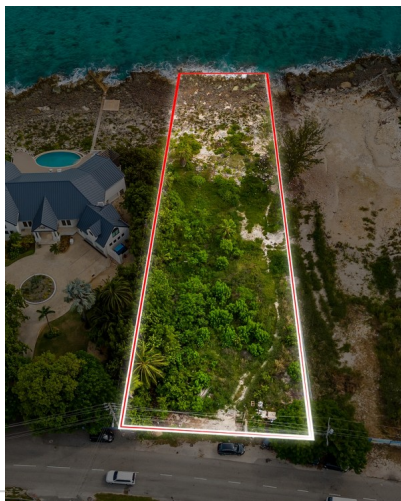
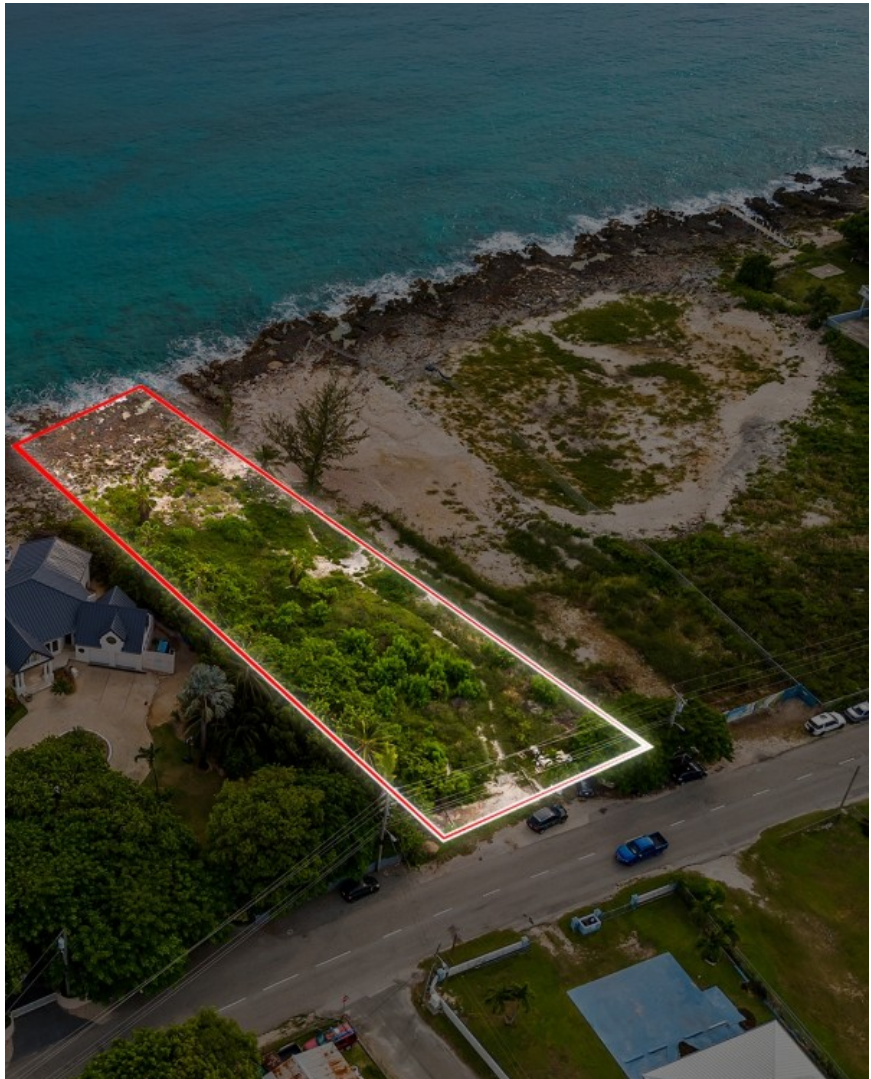


## Nw Point Ocean Front With Smb Views

West Bay South, Cayman Islands

MLS# 418322

**US\$2,995,000**





**Sloane Rhulen**  
sloane@rhulens.com

Discover the ultimate Ocean front parcel and build your own private paradise. This exceptional piece of land offers sweeping unobstructed views of Seven Mile Beach, George Town and beyond to the sparkling ocean and endless horizons. This North West Point stunner is comprised of .58 acres; perfect for a secure bespoke single family home. Zoned Beach Resort / Residential, the parcel allows for up to eight units on site. Enjoy sunrises and sunsets from your back patio, where the rhythmic sound of the waves and salty sea breeze will become part of your daily life. Marvel at sweeping, uninterrupted views of the blue ocean, stretching as far as the eye can see, providing a peaceful and private setting. The setbacks allow for ample space to create the home of your dreams, perfectly positioned to take in 180 degree unobstructed views . Numerous dive sites lie just beyond the shore and along the coastline. Set in a serene, natural environment, this lot offers unmatched seclusion while still being proximate to West Bay and all that the SMB Corridor has to offer. Nearby amenities include Cracked Conch Macabuca, the new restaurant at Dolphin Point Club and a remodeled West Bay Fosters. This rare offering presents a unique opportunity to secure a piece of oceanfront paradise. Whether you're looking for a serene escape or a sound investment, this exceptional property is ready to bring your vision to life.

Essential Information

|                 |        |        |                          |
|-----------------|--------|--------|--------------------------|
| Type            | Status | MLS    | Listing Type             |
| Land (For Sale) | Sold   | 418322 | Beach Resort Residential |

Key Details

|       |        |       |         |
|-------|--------|-------|---------|
| Width | Depth  | Block | Parcel  |
| 94.00 | 306.00 | 2C    | 160/161 |

Additional Features

|                     |              |                         |                          |
|---------------------|--------------|-------------------------|--------------------------|
| Block               | Parcel       | Views                   | Zoning                   |
| 2C                  | 160/161      | Ocean View, Ocean Front | Beach Resort/Residential |
| Covenants           | Possession   | Frontage Road           | Title                    |
| No                  | At Closing   | City Maintained         | Freehold                 |
| Trees               | Sea Frontage | Road Frontage           | Road Surface             |
| Partial Covered     | 70           | North                   | Asphalt                  |
| How Shown           |              |                         |                          |
| By Appointment/List |              |                         |                          |