



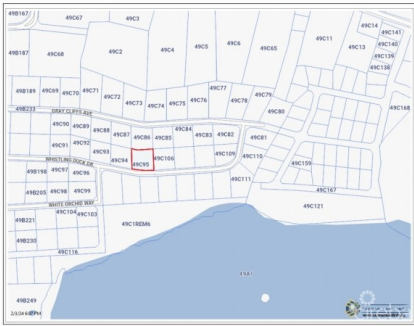
5 Bay Harbour Centre, West Bay Road, Grand Cayman
+1 (345) 938-1000
info@rhulens.com |

SPLENDID VIEW LOT, NORTH SIDE

North Side, Cayman Islands

MLS# 417285

CI\$125,000





Sloane Rhulen
sloane@rhulens.com

Introducing an exceptional opportunity to build your dream home in the district of North Side, on the stunning island of Grand Cayman. This desirable parcel is situated in a subdivision with elevations ranging between 10 and 16 feet above sea level, ensuring your property remains safe from flooding. Zoned as Medium Density Residential, this lot offers a multitude of possibilities, allowing for the construction of stand-alone, semi-detached, and duplex properties. The generous size of the lot, measuring 0.2477 acres, provides ample space to create a truly remarkable living space that suits your unique vision. Located near the renowned Rum Point, you'll have access to the island's pristine beaches, crystal-clear waters, and a variety of recreational activities, including snorkeling, diving, and boating. The district of North Side offers a peaceful and tranquil environment, away from the hustle and bustle of everyday life. Situated approximately 20 miles northeast of George Town, the Cayman Island's capital, you'll have the convenience of easy access to a vibrant financial center and a thriving tourism hub. Explore a plethora of dining options, high-end shopping opportunities, and a lively nightlife scene. With its impressive location and the endless possibilities it presents, this property in North Side is a rare find. Whether you're looking to build your dream home, invest in a rental property, or create a vacation retreat, this parcel offers endless potential. Don't miss out on this unique opportunity to become a part of the idyllic Grand Cayman lifestyle.

Essential Information

Type	Status	MLS	Listing Type
Land (For Sale)	Current	417285	Agriculture

Key Details

Width	Depth	Block	Parcel
108.00	100.00	49C	95

Additional Features

Block	Parcel	Views	Zoning
49C	95	Inland	Medium Density Residential
Road Frontage	Soil		
108	Other		