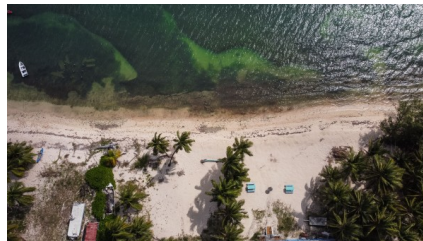


## East End Beachfront / Neighborhood Commercial Lot

East End, Cayman Islands

MLS# 416905

**US\$655,000**



**Sloane Rhulen**  
sloane@rhulens.com

Exciting opportunity to purchase a Beach Front lot in East End. Zoned Neighborhood Commercial, this .30 acre parcel with 95 feet of beach front has endless potential for development.

### Essential Information

Type	Status	MLS	Listing Type
<b>Land (For Sale)</b>	<b>Sold</b>	<b>416905</b>	<b>Commercial</b>

### Key Details

Width	Depth	Block	Parcel
<b>95.00</b>	<b>135.00</b>	<b>72C</b>	<b>135</b>

### Additional Features

Block  
**72C**

Parcel  
**135**

Views  
**Beach Front**

Zoning  
**Commercial  
Neighbourhood**

Covenants  
**No**

Possession  
**At Completion**

Title  
**Freehold**

Sea Frontage  
**95ft**

How Shown  
**Drive by**