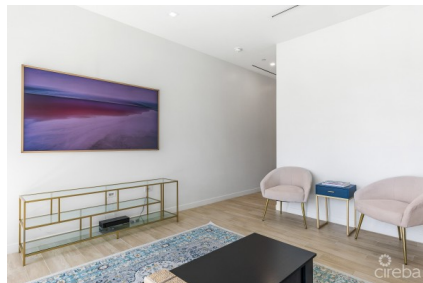


ONE CANAL POINT 313, CANAL FRONT CONDO

Seven Mile Beach, Cayman Islands

MLS# 416668

US\$1,199,000





Sloane Rhulen
sloane@rhulens.com

Introducing this brand new to market, turnkey gem of an apartment nestled within the centrally located ONE Canal Point. In this highly sought-after development, this ground floor condo offers ease of access to the resort style amenities that are arguably some of the best that Cayman has to offer. As you open the solid oak front door, you'll discover an apartment that epitomizes meticulous craftsmanship, featuring soaring ceilings and bespoke Italian millwork. The cleverly designed, two bedroom layout optimizes every inch, seamlessly blending practicality with opulent comfort. Residents at ONE are treated to an array of exceptional amenities, including: the very first dedicated dog park in Cayman, two swimming pools, a fully equipped and professionally designed fitness center, a waterfront yoga platform, and an expansive BBQ area - the perfect setting for relaxing or entertaining. For those looking to purchase for vacation rental investment, ONE Canal Point offers a comprehensive onsite property management and concierge service. For those with a passion for boating, the convenient access to the North Sound and the opportunity to acquire dock space makes ONE Canal Point an unparalleled choice. Situated just moments away from Camana Bay and Seven Mile Beach, this community offers the ultimate everyday convenience. Discover the epitome of Cayman luxury living at ONE Canal Point. Reach out for additional information and to schedule a private viewing today.

Essential Information

| | | | |
|------------------------|---------|--------|--------------|
| Type | Status | MLS | Listing Type |
| Residential (For Sale) | Current | 416668 | Condominium |

Key Details

| | | | |
|------------|---------|-------|----------|
| Bed | Bath | Block | Parcel |
| 2 | 1 | 12C | 520V1H51 |
| Year Built | Sq.Ft. | | |
| 2022 | 1013.00 | | |

Additional Features

| | | | |
|--------------|------------|-------------|-------------|
| Block | Den | Parcel | Views |
| 12C | No | 520V1H51 | Canal Front |
| Sea Frontage | Foundation | Floor Level | Furnished |
| 500 | Slab | 1 | Yes |
| Den | Garage | | |
| No | No | | |