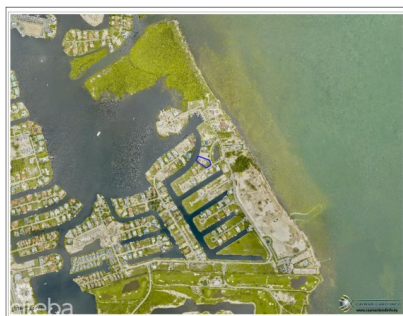


## LARGE ESTATE LOT - LALIQUE CRYSTAL HARBOUR

Seven Mile Beach, Cayman Islands

MLS# 416631

**US\$3,500,000**



**Sloane Rhulen**  
sloane@rhulens.com

Located in the Seven Mile Beach Corridor this oversized waterfront lot is .7376 acres with 100 feet of water frontage. Build your dream home on this large deep Canal Fronting lot suitable for homes over 10,000 sq ft. Affordable HOA fees backed by sensible convenience. One of Cayman best neighbourhoods.

## Essential Information

Type  
**Land (For Sale)**

Status  
**Current**

MLS  
**416631**

Listing Type  
**Agriculture**

Key Details

Width	Depth	Block	Parcel
134.00	275.00	17A	275

Additional Features

Block	Parcel	Views	Zoning
17A	275	Canal Front	Low Density residential
Sea Frontage	Road Frontage	Soil	
100	190	Marl	