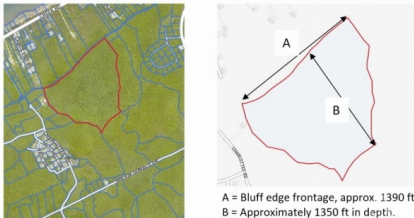


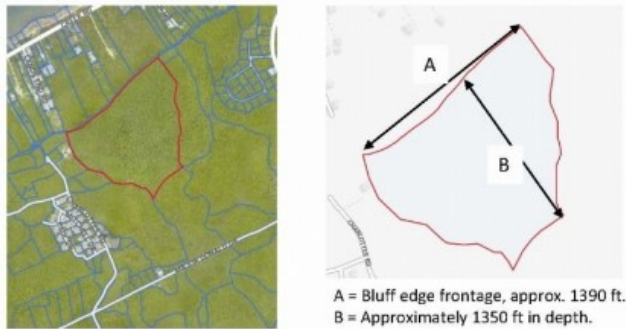
## BRAC BLUFF/1300 FT BLUFF EDGE

Cayman Brac East, Cayman Islands  
 MLS# 416556

**CI\$700,000**



## CAYMAN BRAC BLUFF EDGE 29 ACRES



**ASKING CI\$700,000**

*Location: Cayman Brac, a pristine Caribbean island*  
*Property Size: Expansive 29-acre parcel*  
*Bluff Edge Frontage: Over 1,300 feet along the stunning Bluff edge*  
*Views: Breathtaking and uninterrupted sea views*  
*Access: 30-foot registered undeveloped vehicular right-of-way*  
*Potential: Ideal for a private sanctuary, luxurious retreat, major subdivision, or large-scale resort development*  
*Prime Location: Situated on Cayman Brac's sought-after high Bluff edge*  
*Investment Opportunity: Secure a profitable return on a subdivision development or grand resort, or shape your vision for a secluded oasis*  
*Opportunities of this scale and value are exceedingly rare. Do not miss out on this unique real estate offering – call for more information today!*



**Sloane Rhulen**  
sloane@rhulens.com

This exceptional real estate offering comprises an amazing corner of paradise on the pristine island of Cayman Brac. Nestled on the Bluff edge, this expansive 29-acre property boasts over 1,300 feet of stunning Bluff edge frontage and presents uninterrupted sea views that will take your breath away. The property has benefit of a 30-foot registered undeveloped vehicular right-of-way. The possibilities are many: whether you envision creating a private sanctuary, a luxurious retreat, developing a major subdivision, or embarking on a large-scale resort development project. This property is located in one of Cayman Brac's most sought-after situations: the high Bluff edge. Don't miss the chance to own a slice of this island paradise. Seize the opportunity to shape your vision or secure a very profitable investment return, be it a secluded oasis or a grand resort venture. Opportunities of this scale and value are supremely rare. Act fast, as properties like this rarely grace the market. Call now for more information.

## Essential Information

Type	Status	MLS	Listing Type
<b>Land (For Sale)</b>	<b>Current</b>	<b>416556</b>	<b>Little Cayman/Cayman Brac</b>

## Key Details

Width	Depth	Block	Parcel
<b>1300.00</b>	<b>1350.00</b>	<b>106A</b>	<b>37</b>

## Additional Features

Block	Parcel	Views
<b>106A</b>	<b>37</b>	<b>Water View</b>