

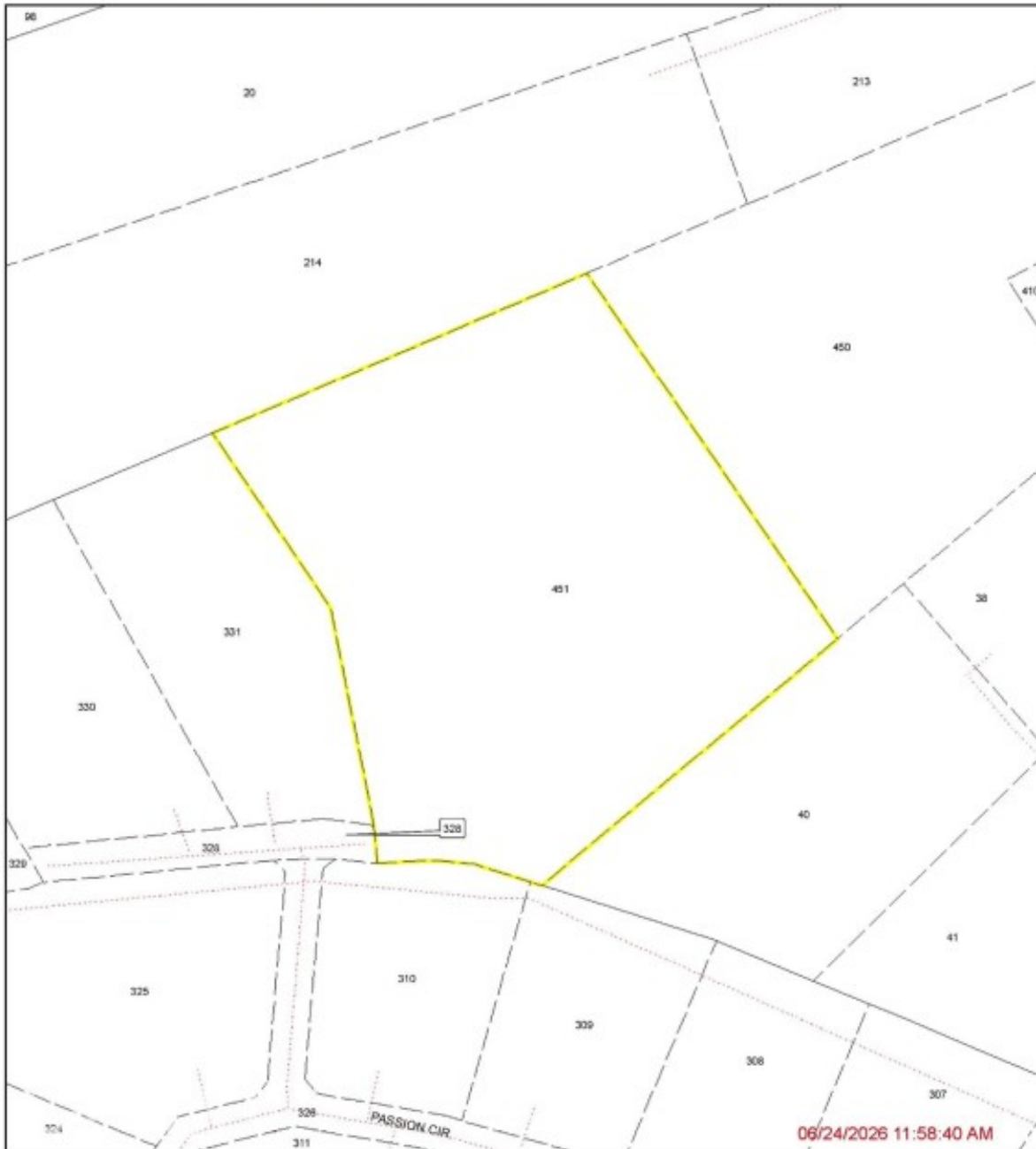


3.235-ACRE DEVELOPMENT PARCEL WITH OPERATIONAL FARM

Bodden Town, Cayman Islands

MLS# 420980

CI\$1,575,000

REGISTRY MAP EXTRACT
SECTION : BODDEN TOWN
Block/Parcel(s) : '43E 451'
Last Mutation Date: 27/3/2026
CAYMAN LAND INFO
Registry Map Extracts must be printed to fit a paper size of 8.5" x 11" in order to retain a scale of 1:1,250
Lands and Survey Department © Cayman Islands Government. All Rights Reserved.
Reproduction in whole or in part by any means is prohibited without prior written permission from the Lands & Survey Department.
Lands & Survey Department, P.O. Box 120, Grand Cayman KY1-9000, Cayman Islands. Tel: 1 (345) 244-3433 | Web: www.caymanlandinfo.ky





Sloane Rhulen
sloane@rhulens.com

Excellent opportunity for residential or agricultural development, with the added benefit of a fully operational, income-generating egg farm already in place. Zoned Agriculture/Residential, the property offers flexibility for a buyer looking to subdivide, build out, or hold for future development. The land is partially treed and includes registered road access. Well-positioned to benefit from the planned East-West Arterial expansion (Phases 2 & 3), which will significantly improve connectivity to George Town and the wider island. A rare opportunity to secure a significant parcel in a rapidly evolving corridor with a fully operational farm as an added advantage.

Essential Information

Type	Status	MLS	Listing Type
Land (For Sale)	New	420980	Agriculture

Key Details

Width	Depth	Block	Parcel
397.00	350.00	43E	451

Additional Features

Block	Parcel	Views	Zoning
43E	451	None	Agriculture/Residential