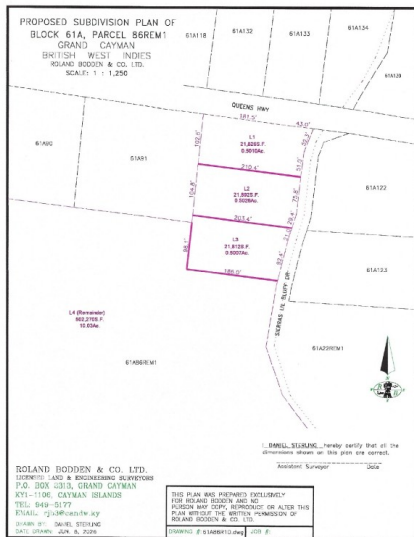


0.5010 ACRES | BUILD YOUR DREAM HOME IN EAST END

N.E. Coast, Cayman Islands

MLS# 420964

CI\$155,000



Sloane Rhulen
 sloane@rhulens.com

Set directly across the road from the ocean, this 0.5010-acre parcel presents an excellent opportunity to build a custom home in one of Grand Cayman's most peaceful communities. The property sits approximately 20 feet above sea level, offering naturally well-drained land and an attractive setting for future development, subject to planning approval. East End is known for its quiet surroundings, beautiful coastline, and laid-back atmosphere, while still being within easy reach of restaurants, beaches, diving, and everyday conveniences. Whether you're looking to build your island home or secure land for the future, this generously sized parcel offers flexibility and long-term potential in a location that continues to attract buyers seeking space and privacy. Adjacent half-acre parcels are also available, providing the opportunity to purchase additional land if desired.

Essential Information

Type
Land (For Sale)

Status
New

MLS
420964

Listing Type
Agriculture

Key Details

Width
224.50

Depth
103.30

Block
61A

Parcel
86REM1L1

Additional Features

Block
61A

Parcel
86REM1L1

Views
Inland, Ocean View