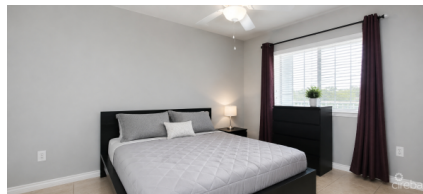


## LAKESIDE--1BED/1BATH--CLOSE TO CAMANA BAY/SEVEN MILE BEACH

George Town Central, Cayman Islands

MLS# 420961

**CI\$339,000**





**Sloane Rhulen**  
sloane@rhulens.com

Located in the sought after Lakeside community, this well designed 1 bed, 1 bath apartment offers the perfect blend of comfort, convenience and value. Ideally situated just minutes from Camana Bay, Seven Mile Beach, shopping, dining and major business districts, this property is perfectly positioned for both owner occupiers and investors. Thoughtfully designed to maximize every square foot, the efficient floor plan creates a comfortable and functional living space that feels open and inviting. The full kitchen features granite countertops, ample cabinetry and flows seamlessly into the living and dining areas, making everyday living and entertaining effortless. Large windows allow natural light to fill the home, creating a bright and welcoming atmosphere throughout. Located on the second floor, the apartment enjoys a desirable position within the community, only steps from the swimming pool and fully equipped fitness center. The spacious bedroom provides a peaceful retreat, while the washer and dryer in unit add everyday convenience. Residents of Lakeside benefit from well maintained grounds, a resort style pool, and a 24 hour gym, all within one of Grand Cayman's most convenient locations. Whether you are looking for a primary residence, long term rental investment or an island getaway, this turnkey property presents an excellent opportunity to own in a highly desirable community close to all the amenities of the Seven Mile Beach corridor. Don't miss your opportunity to secure an affordable slice of island living in one of Grand Cayman's most convenient locations!

## Essential Information

Type	Status	MLS	Listing Type
<b>Residential (For Sale)</b>	<b>New</b>	<b>420961</b>	<b>Condominium</b>

## Key Details

Bed	Bath	Block	Parcel
<b>1</b>	<b>1</b>	<b>13D</b>	<b>261H168</b>
Year Built	Sq.Ft.		
<b>2007</b>	<b>488.00</b>		

## Additional Features

Block	Den	Parcel	Views
<b>13D</b>	<b>No</b>	<b>261H168</b>	<b>Inland</b>
Floor Level	Furnished	Den	
<b>2</b>	<b>Yes</b>	<b>No</b>	