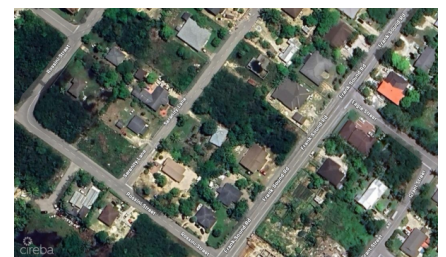


NORTH SIDE DEVELOPMENT LOT WITH PARTIAL CONSTRUCTION & PLANS

Midland East, Cayman Islands
MLS# 420913

CI\$299,000



Sloane Rhulen
sloane@rhulens.com

This property features a cleared, levelled lot in a quiet residential neighbourhood, offering a prime foundation for a residential project. The land has fertile soil with mature fruit trees, ready for landscaping and gardening. Agent owned. Structure Details: The site includes a partially constructed two-story residence designed to reach 2,663 sq. ft. upon completion. Significant structural work has been finalised, including:

- Reinforced foundation
- Structural framing for both floors
- Staircase installation

This property provides a substantial head start on development, with the primary structural components already in place.

Essential Information

Type Land (For Sale)	Status New	MLS 420913	Listing Type Agriculture
--------------------------------	----------------------	----------------------	------------------------------------

Key Details

Width 102.00	Depth 102.00	Block 54D	Parcel 93
------------------------	------------------------	---------------------	---------------------

Additional Features

Block 54D	Parcel 93	Views Garden View	Zoning Low Density residential
Road Frontage Yes	Soil Black		