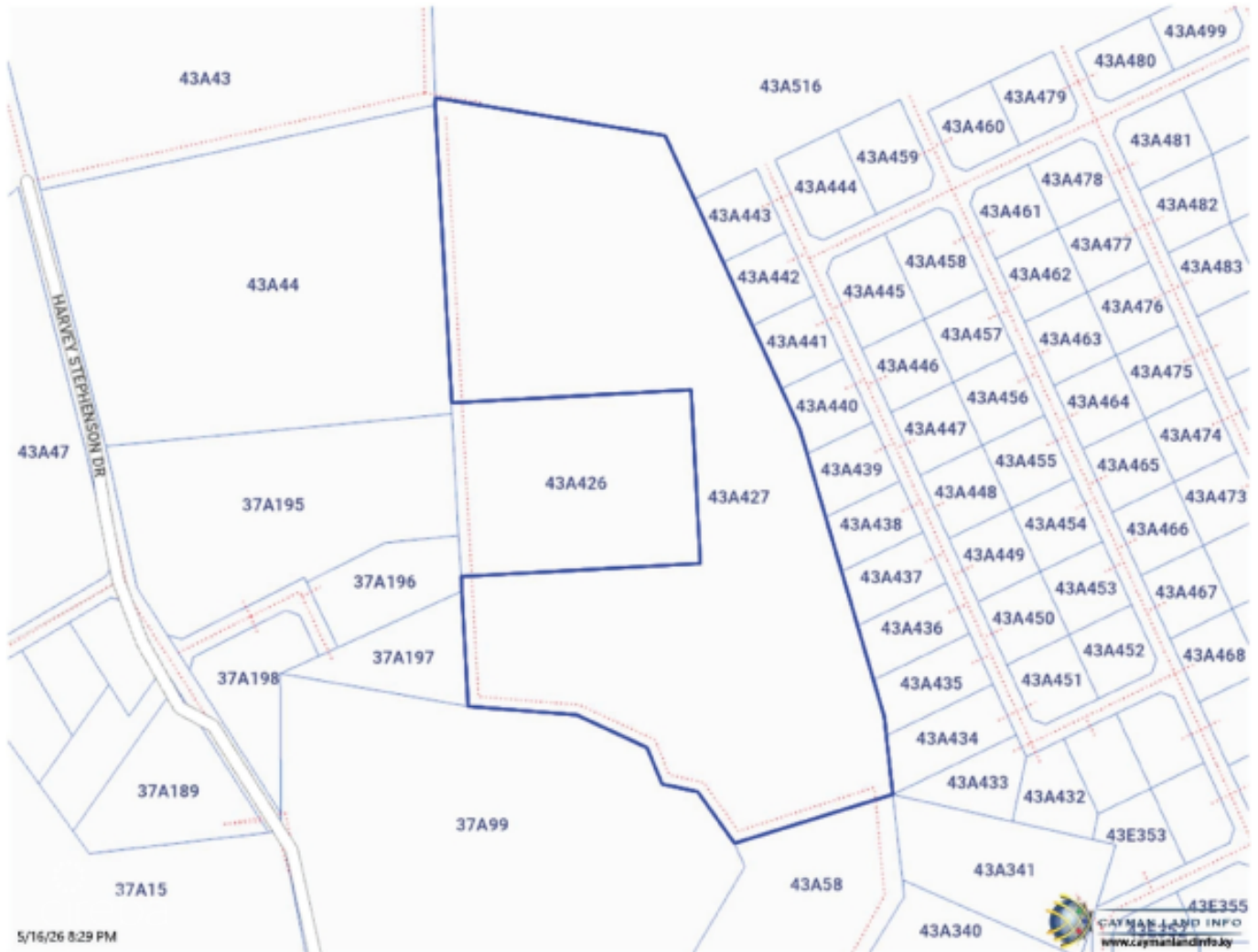


## EAST END GARDENS & GIFTS FARM LAND

Bodden Town, Cayman Islands

MLS# 420854

**CI\$995,000**





**Sloane Rhulen**  
sloane@rhulens.com

A rare opportunity to acquire more than 8 acres of prime land in Bodden Town, one of Grand Cayman’s fastest-growing and most strategically positioned districts. Offering exceptional flexibility for agricultural use, residential development, or long-term land banking, this remarkable property combines scale, usability, and investment potential in the thriving Cayman Islands real estate market. With flat, highly usable terrain and two established freshwater wells, the property is ideally suited for farming operations, a private estate, eco-conscious retreat, luxury residential enclave, or future subdivision development. Large parcels of developable land in Grand Cayman are becoming increasingly scarce, particularly in high-growth areas like Bodden Town, making this an outstanding opportunity. A matter of minutes from beaches, schools, restaurants, and everyday amenities, the property offers the perfect balance of peaceful island living and accessibility. As infrastructure expansion and population growth continue across Grand Cayman’s eastern districts, demand for substantial land holdings continues to rise. Beyond its physical appeal, the Cayman Islands remain one of the world’s premier tax-neutral jurisdictions, attracting international investors seeking long-term security and financial efficiency. Benefits include no annual property tax, no income tax, no capital gains tax, and no inheritance tax — advantages that continue to strengthen Cayman’s reputation as a globally desirable real estate destination. Whether you are seeking agricultural land in Grand Cayman, Cayman Islands development property, or a strategic Caribbean real estate investment with future upside, this exceptional Bodden Town offering represents a rare chance to secure meaningful acreage in one of the Caribbean’s most prestigious markets.

## Essential Information

Type	Status	MLS	Listing Type
<b>Land (For Sale)</b>	<b>New</b>	<b>420854</b>	<b>Agriculture</b>

## Key Details

Width	Depth	Block	Parcel
<b>353.00</b>	<b>990.00</b>	<b>43A</b>	<b>427</b>

## Additional Features

Block	Parcel	Views	Zoning
<b>43A</b>	<b>427</b>	<b>Garden View, Inland</b>	<b>Agriculture/Residential</b>
Road Frontage	Soil		
<b>none</b>	<b>Clay</b>		