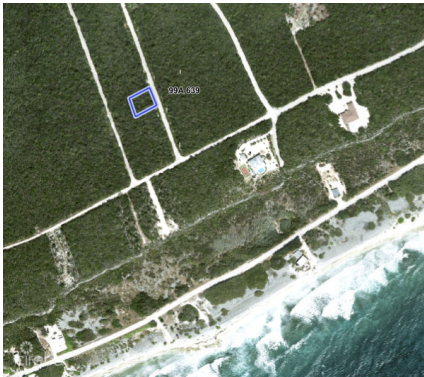


PREMIUM ELEVATED LOT IN THE HEART OF CAYMAN BRAC

Cayman Brac Centre, Cayman Islands

MLS# 420699

CI\$62,000





Sloane Rhulen
sloane@rhulens.com

Parcel 99A639 is a beautifully positioned 0.28-acre residential lot located within the emerging Isabela Estates community on the Cayman Brac Bluff. With strong elevation, ready-to-install utilities, and superior road access, this parcel offers a rare combination of safety, convenience, and long-term value. This is an ideal opportunity for a future home, a long-term investment, or a generational landholding in one of the island’s most stable and desirable interior zones. ✓ Elevated & Secure • 38 feet above sea level • Naturally hurricane-resilient • Solid limestone foundation ideal for construction ✓ Build-Ready Infrastructure • Electrical Utility: Fully paid and ready for immediate installation. • Chip & spray surfaced road (superior to marl) • Two road access points into the estate ✓ Ideal Central Location • 1500 ft from the sea • 1 mile from Le Soleil D’or Hotel • Quiet, private, and elevated • Minutes from airport, grocery, schools, and medical services ✓ Strong Investment Profile • Located in a growing residential corridor • Elevated land continues to appreciate faster than coastal interior lots • Perfect for long-term holding or immediate development Parcel 99A639 is ready for transfer and development. Whether you’re building a home or securing land for the future, this lot offers unmatched value at this price point.

Essential Information

Type Land (For Sale)	Status Current	MLS 420699	Listing Type Little Cayman/Cayman Brac
--------------------------------	--------------------------	----------------------	--

Key Details

Width 127.00	Depth 112.00	Block 99A	Parcel 639
------------------------	------------------------	---------------------	----------------------

Additional Features

Block 99A	Parcel 639	Views Garden View	Road Frontage 112
---------------------	----------------------	-----------------------------	-----------------------------