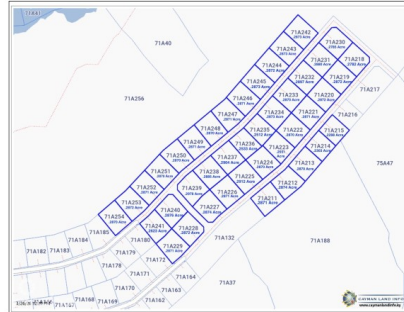
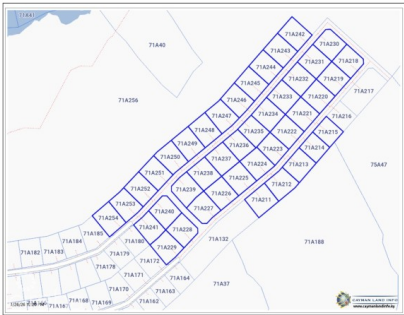


## CORAL COURTS SUBDIVISION - FARM ROAD EAST END

East End, Cayman Islands

MLS# 420608

**CI\$150,072**



**Sloane Rhulen**  
 sloane@rhulens.com

Consider investing in this spacious lot, whether it's for your family's future home with ample space for a garden, or for building a duplex as an investment. The neighborhood is healthful, peaceful, and well-established.

### Essential Information

Type  
**Land (For Sale)**

Status  
**Current**

MLS  
**420608**

Listing Type  
**Agriculture**

### Key Details

Width  
**108.00**

Depth  
**114.00**

Block  
**71A**

Parcel  
**221**

## **Additional Features**

Block  
**71A**

Parcel  
**221**

Views  
**Garden View**

Zoning  
**Low Density  
residential**

Road Frontage  
**No**

Soil  
**Marl**