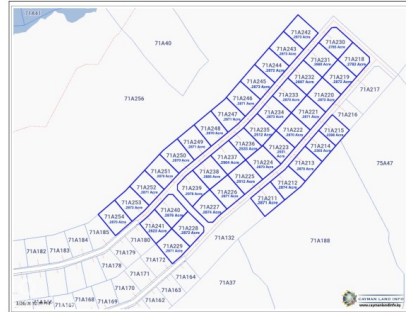
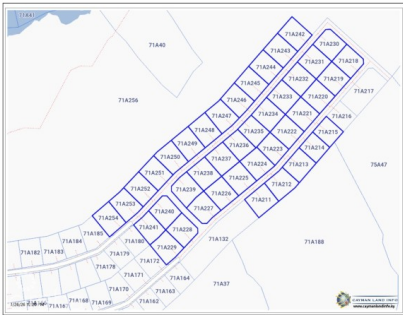


CORAL COURTS SUBDIVISION - FARM ROAD EAST END

East End, Cayman Islands

MLS# 420607

CI\$150,120



Sloane Rhulen
 sloane@rhulens.com

Consider investing in this spacious lot, whether it's for your family's future home with ample space for a garden, or for building a duplex as an investment. The neighborhood is healthful, peaceful, and well-established.

Essential Information

Type	Status	MLS	Listing Type
Land (For Sale)	Current	420607	Agriculture

Key Details

Width
104.00

Depth
114.00

Block
71A

Parcel
220

Additional Features

Block
71A

Parcel
220

Views
Garden View

Zoning
**Low Density
residential**

Road Frontage
No

Soil
Marl