

GEORGE TOWN BUSINESS PARK - WAREHOUSE, OFFICE, RETAIL AND MORE

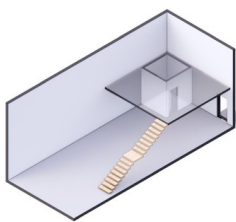
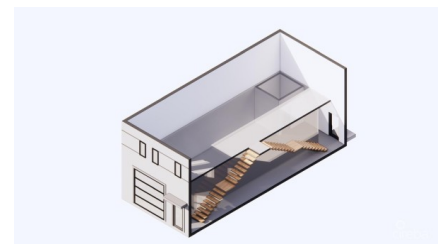
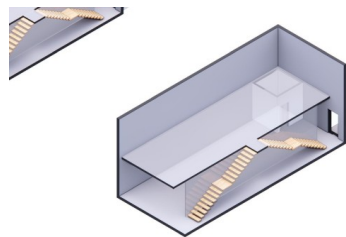
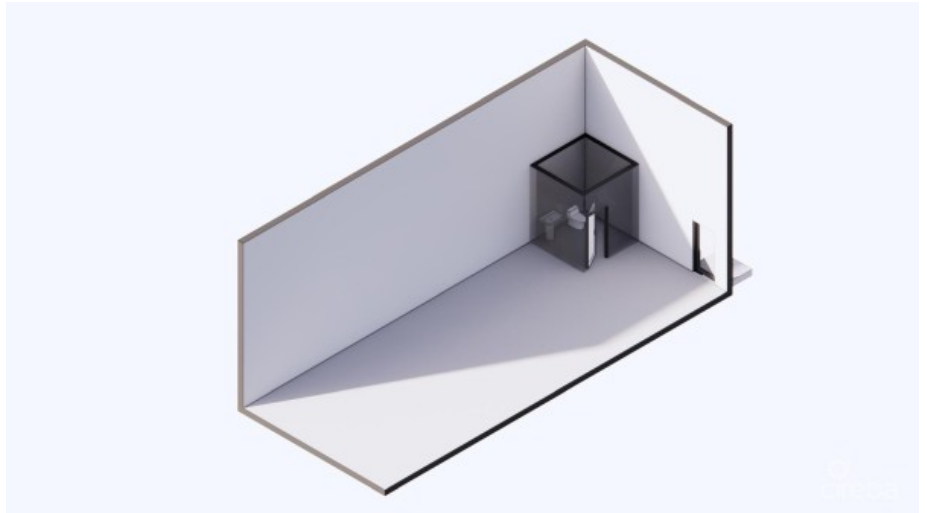
George Town Central, Cayman Islands

MLS# 419117

CI\$660,000



Property Map





Sloane Rhulens
sloane@rhulens.com

Positioned in the heart of George Town’s business district, GT Business Park offers a rare opportunity to secure a commercial space in a prime location within the city’s Golden Triangle, conveniently situated between Mary Street and Godfrey Nixon Way. Key Features: - Modern Commercial Units – 1,060 sq. ft. footprint with structural provisions for an additional second floor, expanding to 2,120 sq. ft. Add'l 350 sq ft of mezzanine is included in price. - Strategic Location – High visibility and accessibility within George Town’s commercial hub. - Sustainability Focused – Each unit is equipped with a 5KW solar panel system under the CUC CORE Programme, feeding unused electricity back to the grid for energy credits. - Built for Resilience – Category 5 hurricane-rated structure with a rigid moment-resisting frame and 10' above sea level elevation. - High-Performance Building Envelope – Engineered for durability, efficiency, and climate resilience. - Ample Parking – Over 60 parking spaces for convenience. - Versatile Design – Open floor plans without load-bearing walls, allowing for flexible configurations such as: - High-value climate-controlled storage - Commercial enterprises - Office spaces - Multi-level setups - Unlock the Potential of Your Business Designed with adaptability in mind, these units seamlessly integrate structural, mechanical, electrical, and plumbing accommodations—allowing for maximum efficiency and customization. Whether you need a high-tech workspace, showroom, or scalable business hub, GT Business Park provides a future-proof solution in a thriving commercial district. Don't miss this opportunity to be part of George Town’s revitalization and secure a space in one of the Cayman Islands' most forward-thinking developments.

Essential Information

Type Commercial (For Sale)	Status Current	MLS 419117	Listing Type Residential
--------------------------------------	--------------------------	----------------------	------------------------------------

Key Details

Block 14CF	Parcel 214H17
Year Built 2025	Sq.Ft. 2000.00

Additional Features

Block 14CF	Lot Size 1.46	Parcel 214H17	Views Garden View
----------------------	-------------------------	-------------------------	-----------------------------

Foundation
Slab