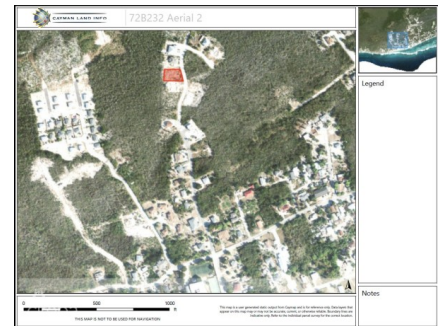
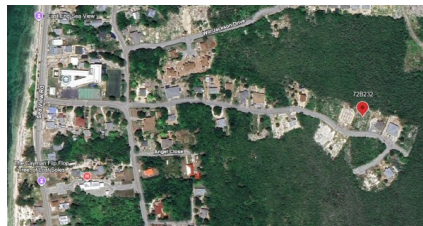
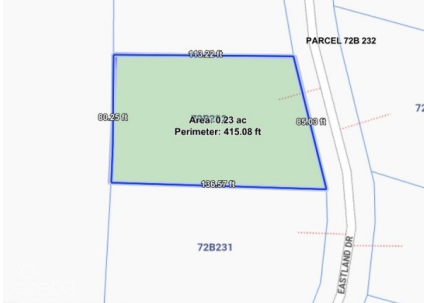
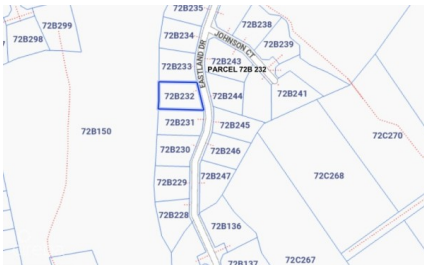
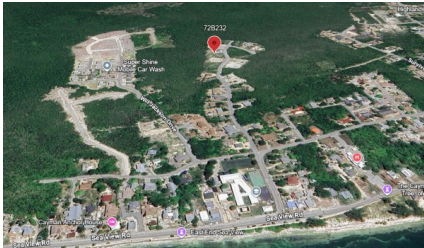


# PRIME EAST END 0.23 ACRE MEDIUM DENSITY LOT NEAR EAST END PRIMARY SCHOOL

East End, Cayman Islands

MLS# 420466

**CI\$125,000**





**Sloane Rhulen**  
sloane@rhulens.com

This 0.2319-acre (10,101 sq ft) medium density residential lot is ideally located in East End, just minutes from East End Primary School and surrounding community amenities. Offering excellent development potential, the medium density zoning allows for duplex or multi-unit residential construction (subject to planning approval), making it an attractive opportunity for builders, investors, or first-time homeowners looking to develop in a growing area. The parcel is level and well-proportioned, providing flexibility in design and layout. Located in a quiet residential pocket, yet within convenient access to schools, shops, and the main East End roadway. East End continues to see steady demand for affordable residential development, making this a smart long-term investment or build-ready opportunity. Contact today for further details or to arrange a site visit.

## Essential Information

Type <b>Land (For Sale)</b>	Status <b>Reduced</b>	MLS <b>420466</b>	Listing Type <b>Agriculture</b>
--------------------------------	--------------------------	----------------------	------------------------------------

## Key Details

Width <b>85.00</b>	Depth <b>136.00</b>	Block <b>72B</b>	Parcel <b>232</b>
-----------------------	------------------------	---------------------	----------------------

## Additional Features

Block <b>72B</b>	Parcel <b>232</b>	Views <b>Garden View</b>	Zoning <b>Medium Density Residential</b>
Road Frontage <b>85</b>	Soil <b>Rock</b>		