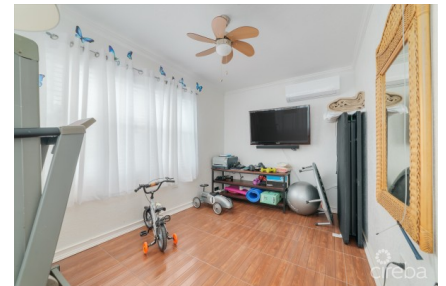


PARKLANE LIVING TOWNHOUSE

South Sound, Cayman Islands

MLS# 420303

CI\$540,000





Sloane Rhulen
sloane@rhulens.com

Rare Find in the Heart of George Town--Low Fees, Big Value! Be only the second owner of this beautifully updated 2-bedroom, 2.5-bath townhouse with a spacious den large enough to serve as a third bedroom, offering over 1,100 square feet of comfortable, flexible living space in the sought-after Parklane community on Outpost Street, George Town. Tucked away in an intimate complex of just 6 units, this home delivers privacy, convenience, and exceptional value. What truly sets this property apart is its exceptionally low strata and insurance of under \$300 per month--a rare and almost unheard-of benefit in this area of George Town. This makes it an outstanding primary residence and a smart, low-holding-cost investment. The home has been tastefully updated and is move-in ready, with an oversized den perfect for a third bedroom, home office, gym or media room. Enjoy being just minutes from downtown, schools, shopping, dining, and Seven Mile Beach. Key Highlights: --Over 1,100 sq. ft. of living space --2 Bedroom/2.5 Bathrooms --Large den suitable as a third bedroom - -Second owner --Only 6 units in the complex --Updated and move-in ready --Strata & insurance under \$300/month--extremely rare for this area --Prime Outpost Street, George Town location --Excellent for end-users and investors This is a true hidden gem in the capital--combining space, location, ultra-low fees, and exclusivity in one unbeatable opportunity. *There is additional square footage due to outdoor patio owner built*

Essential Information

| | | | |
|-------------------------------|----------------|---------------|--------------------|
| Type | Status | MLS | Listing Type |
| Residential (For Sale) | Reduced | 420303 | Condominium |

Key Details

| | | | |
|-------------|----------------|------------|--------------|
| Bed | Bath | Block | Parcel |
| 2 | 2.5 | 15C | 209H1 |
| Year Built | Sq.Ft. | | |
| 2003 | 1156.00 | | |

Additional Features

| | | | |
|-------------|------------|--------------|--------------------|
| Block | Den | Parcel | Views |
| 15C | No | 209H1 | Garden View |
| Foundation | Furnished | Den | |
| Slab | Yes | Yes | |