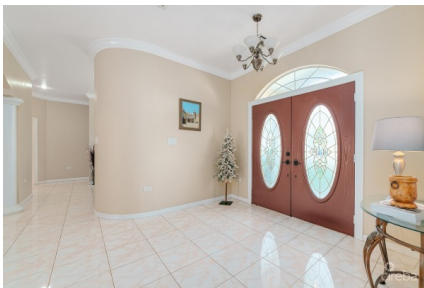


4 BED + OFFICE / 3.5 BATH SINGLE FAMILY HOME

Savannah, Cayman Islands

MLS# 420156

CI\$985,000





Sloane Rhulen
sloane@rhulens.com

Check out this stunning 4,200 sq. ft. single-family home located in the highly sought-after Savannah Meadows. This impressive residence offers 4 spacious bedrooms plus an office, 3.5 bathrooms, and a massive oversized two-car garage, providing endless possibilities for storage, or hobbies. Situated on a generous 0.29-acre lot, the home is ideally located near Countryside in Savannah, just minutes from restaurants, schools, supermarkets, and gas stations—offering both convenience and a family-friendly neighborhood feel. This is a solidly built, all-concrete home throughout, a level of craftsmanship that’s becoming increasingly rare—they simply don’t build homes like this anymore. Designed for durability and longevity, this property stands the test of time. Owned by only one family, the home has been exceptionally well maintained and lovingly cared for, reflecting true pride of ownership. With its size, construction quality, and prime location, this property presents an outstanding opportunity for homeowners seeking space, strength, and long-term value.

Essential Information

| | | | |
|---------------------------------------|--------------------------|----------------------|---|
| Type Residential (For Sale) | Status Reduced | MLS 420156 | Listing Type Single Family Home |
|---------------------------------------|--------------------------|----------------------|---|

Key Details

| | | | |
|---------------------------|--------------------------|---------------------|----------------------|
| Bed 4 | Bath 3.5 | Block 28C | Parcel 244 |
| Year Built 2004 | Sq.Ft. 4200.00 | | |

Additional Features

| | | | |
|-----------------------------|--|-------------------------------|----------------------|
| Block 28C | Den No | Lot Size 0.29 | Parcel 244 |
| Views Garden View | Foundation Slab | Furnished Partially | Den Yes |
| Garage 2 | Zoning Low Density residential | | |