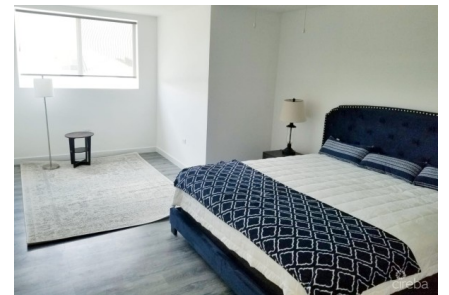


ROYAL PINES SPACIOUS TOWNHOUSE STYLE CONDO

George Town East, Cayman Islands

MLS# 419618

CI\$595,000





Sloane Rhulen
sloane@rhulens.com

Step into this thoughtfully designed 3bed/3.5bath townhome with a versatile den, located in a well maintained complex only minutes from George Town, schools, supermarkets and Grand Harbour/Harbour Walk. This spacious residence offers a perfect blend of functionality and comfort across three levels, ideal for families or professionals seeking convenience and style. The ground floor welcomes you through a charming mini foyer into an open-concept living space that includes a full size modern kitchen with a breakfast bar, a dedicated dining area and a cozy living room. Sliding patio doors lead to a private back garden, perfect for relaxing or entertaining. A convenient half bathroom is also located on this level, along with two dedicated parking spaces directly in front of the unit and visitor parking just steps away. Upstairs on the second floor, you'll find two generously sized bedrooms, each with its own full bathroom, offering privacy and comfort for family members or guests. The laundry closet with a full-size washer and dryer is also located on this floor, along with a tankless water heater for energy efficiency. The third floor is a private retreat featuring the primary bedroom with two spacious closets, one of which is a walk-through leading to a full size bathroom and a cozy den tucked within the bedroom itself. On the same floor, there is a separate private den just down the hallway that offers flexible use as a home office, nursery, extra bedroom, or storage space, depending on your needs. Residents enjoy access to a communal gated pool, gym, and clubhouse just steps from the home, creating a resort-style atmosphere in a peaceful, secure setting. This property combines modern living with practical amenities in a prime location, making it an exceptional opportunity for homeowners and investors alike.

Essential Information

Type	Status	MLS	Listing Type
Residential (For Sale)	Pen/Con	419618	Condominium

Key Details

Bed	Bath	Block	Parcel
3	3.5	20D	430H25
Year Built	Sq.Ft.		
2020	2100.00		

Additional Features

Block	Den	Parcel	Views
20D	No	430H25	Garden View, Inland

Foundation
Slab

Furnished
Yes

Den
Yes

Garage
No