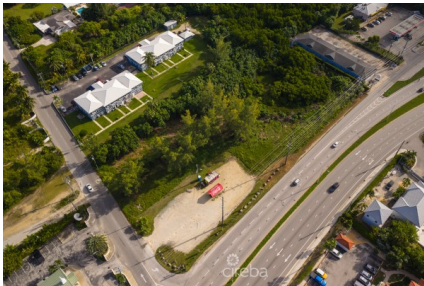


HIGH VISIBILITY COMMERCIAL PARCEL ON SHAMROCK RD

Prospect / Newlands, Cayman Islands

MLS# 419963

CI\$4,999,000



Sloane Rhulen
sloane@rhulens.com

Exceptional 2.4-acre site in one of Grand Cayman's most convenient and fast-growing areas. Ideally positioned along Prospect's main corridor with excellent road frontage and direct access to Shamrock Road, this property offers superb visibility and easy access just minutes from Grand Harbour Shops, schools, and main access routes. Zoned Neighbourhood Commercial, the land is level (approx. 3-4 ft ASL), and with connections to mains water and electricity available, investors and developers can move forward with confidence. Suitable for offices, retail, medical clinics, restaurants, or other community-focused enterprises, this property offers flexibility for a vibrant mixed-use project. Endless potential. Unbeatable location. Unlock the potential of this key Prospect location.

Essential Information

| | | | |
|--------------------------------|--------------------------|----------------------|-----------------------------------|
| Type Land (For Sale) | Status Current | MLS 419963 | Listing Type Commercial |
|--------------------------------|--------------------------|----------------------|-----------------------------------|

Key Details

| | | | |
|------------------------|------------------------|---------------------|-----------------------------------|
| Width 256.80 | Depth 411.79 | Block 23B | Parcel 97,98,99,100,101 |
|------------------------|------------------------|---------------------|-----------------------------------|

Additional Features

| | | | |
|---------------------|---------------------------------------|------------------------|---|
| Block 23B | Parcel 97, 98, 99, 100, 101 | Views Inland | Zoning Commercial Neighbourhood |
|---------------------|---------------------------------------|------------------------|---|

Road Frontage
Yes