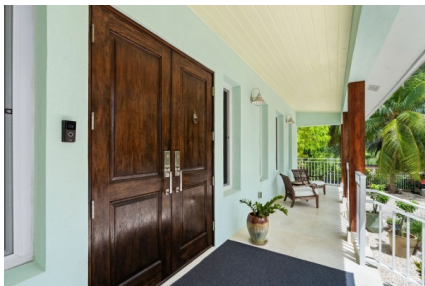


SUNRISE LANDING FAMILY HOME

Savannah, Cayman Islands

MLS# 419780

CI\$1,850,000





Sloane Rhulen
sloane@rhulens.com

Executive Waterfront Home in Sunrise Landing Located in the highly sought-after community of Sunrise Landing, this stunning executive waterfront home is a must-see. Perched twelve feet above sea level and thoughtfully designed, it offers the perfect blend of safety, style, and comfort, a dream spot for waterfront living and family life Step inside to find soaring ceilings and light-filled rooms throughout. At the heart of the home, the chef’s kitchen boasts a large granite island, abundant storage, a butler’s pantry, and premium appliances, perfect for entertaining friends and family The primary suite, conveniently located on the main level, features a spa-inspired walk-in shower and a spacious walk-in closet. Upstairs, two additional ensuite bedrooms are separated by a versatile landing ideal as a children’s playroom or study area. Outdoor living is equally impressive: • Expansive screened patio for year-round dining and entertaining • A resort-style swim spa framed by lush, low-maintenance gardens built for the climate • A variety of mature fruit trees • A custom 80-foot boat dock with swim ladder and floating jet ski dock Additional highlights include a guest suite with kitchen and bath above the two-car garage, custom-built storage, and exceptional efficiency features: • Custom tilt-and-turn, impact-rated tinted windows • Spray foam insulation in attic and exterior walls • Propane appliances and a 30KW propane generator Built in 2017, this home combines modern efficiency with classic style and the kind of waterfront living families love

Essential Information

Type	Status	MLS	Listing Type
Residential (For Sale)	Current	419780	Single Family Home

Key Details

Bed	Bath	Block	Parcel
4	4.5	27C	701
Year Built	Sq.Ft.		
2017	4823.00		

Additional Features

Block	Den	Lot Size	Parcel
27C	No	0.35	701
Views	Sea Frontage	Foundation	Furnished
Canal Front, Canal View	100	Slab	Yes

Den
Yes

Garage
2

Zoning
**Low Density
residential**