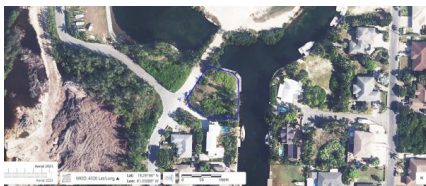


## DOUBLE CANAL FRONTAGE OMEGA BAY LOT

Spotts, Cayman Islands

MLS# 419747

**CI\$399,000**



**Sloane Rhulen**

sloane@rhulens.com

Double Canal Frontage Omega Bay Lot at the end of Bay Island Avenue, situated opposite the junction with Roxborough Street. Close to Grand Harbour Shopping Complex & Harbour Walk with all the conveniences of cafe's, restaurants, grocery stores, and other retails stores.

## Essential Information

Type  
**Land (For Sale)**

Status  
**Current**

MLS  
**419747**

Listing Type  
**Agriculture**

## Key Details

Width  
**185.00**

Depth  
**154.00**

Block  
**24E**

Parcel  
**632**

## Additional Features

Block  
**24E**

Parcel  
**632**

Views  
**Canal View**

Zoning  
**Low Density  
residential**

Sea Frontage  
**Yes**

Road Frontage  
**30**