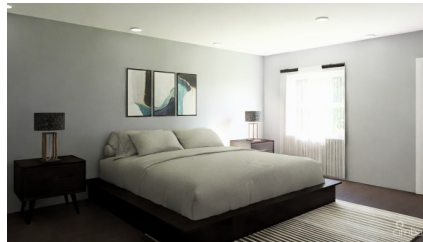


HALIFAX HEIGHTS MODERN 2 BED 3/5 BATH TOWN HOME - END UNIT

George Town East, Cayman Islands

MLS# 419387

CI\$605,000





Sloane Rhulen
sloane@rhulens.com

Discover modern island living at Halifax Heights, a boutique pre-construction community ideally situated off Linford Pierson Highway in George Town. Phase 1 features four thoughtfully designed 2-bedroom townhomes, each offering 3.5 bathrooms and a versatile den—perfect for a home office, or additional living space. End units span 1,601 sq. ft., while interior units offer 1,534 sq. ft., all crafted with contemporary aesthetics and functional layouts to ensure maximum comfort and convenience. Key Features: Spacious Layouts: Each townhome includes 2 bedrooms, 3.5 bathrooms, and a flexible den space. Modern Design: Open-concept living areas with high-quality finishes and fixtures. Built to the Highest Standard: ICF Construction, standing seam metal roofing, hurricane impact windows and doors, Poly Icynene Insulation for year round comfort and energy efficiency. Prime Location: Centrally located with easy access to downtown George Town, CEC campus, hospitals, the Pickleball Center, schools, shopping centers, and Camana Bay. With construction scheduled to begin in Q3 2025, now is the perfect time to secure your place in this exclusive community. Whether you're a first-time homebuyer, a growing family, or seeking a smart investment, Halifax Heights offers the ideal blend of location, design, and value. For more information or to reserve your unit, please contact us today.

Essential Information

| | | | |
|------------------------|---------|--------|--------------|
| Type | Status | MLS | Listing Type |
| Residential (For Sale) | Pen/Con | 419387 | Condominium |

Key Details

| | | | |
|------------|---------|-------|--------|
| Bed | Bath | Block | Parcel |
| 2 | 3.5 | 20E | 393H1 |
| Year Built | Sq.Ft. | | |
| 2026 | 1601.00 | | |

Additional Features

| | | | |
|------------|-----------|--------|--------|
| Block | Den | Parcel | Views |
| 20E | No | 393H1 | Inland |
| Foundation | Furnished | Den | Garage |
| Slab | No | Yes | No |