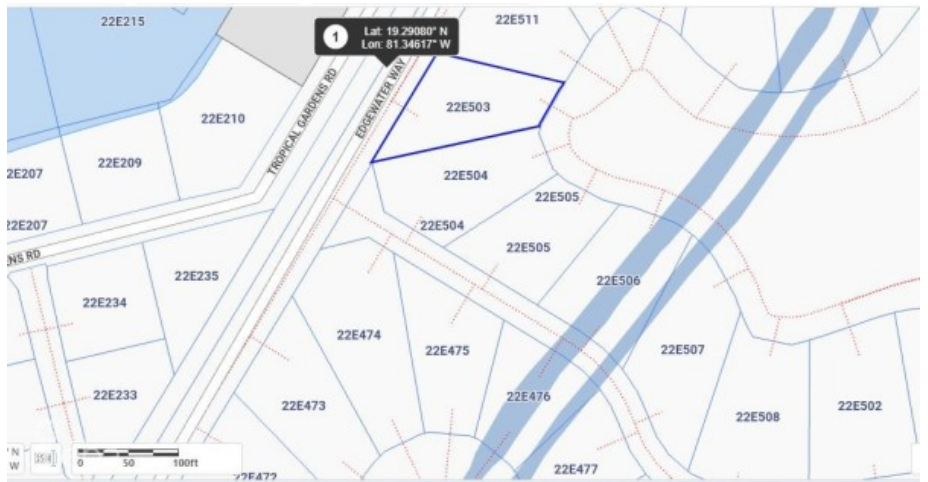


HARBOUR REACH

Prospect / Newlands, Cayman Islands

MLS# 419227

CI\$695,000





Sloane Rhulen
sloane@rhulens.com

Prime location, in a sought-after community on the canal, in a serene environment under CI 500K, sounds like paradise & It Is paradise. Canal view house lot in the prestigious Harbour Reach community in Grand Harbour. Harbour Reach is Canal lot community with direct access to the North Sound with a cantilevered 40 foot dock, this and these lots are all filled with compacted aggregate and safety retained by a keystone seawall which means there is no need for the added expense of pilings. Harbour Reach offers a 24-7 manned gatehouse with strong covenants to ensure high standards and quality upliftment of this beautifully landscaped community conveniently located within walking distance of Harbour Walk complex & Grand Harbour Shopping Complex with restaurants, café, Hurleys supermarket. Agent Owned

Essential Information

| | | | |
|-----------------|---------|--------|--------------|
| Type | Status | MLS | Listing Type |
| Land (For Sale) | Current | 419227 | Agriculture |

Key Details

| | | | |
|-------|--------|-------|--------|
| Width | Depth | Block | Parcel |
| 95.00 | 135.00 | 22E | 503A |

Additional Features

| | | | |
|--------------|---------------|------------|-------------------------|
| Block | Parcel | Views | Zoning |
| 22E | 503A | Canal View | Low Density residential |
| Sea Frontage | Road Frontage | | |
| Yes | No | | |