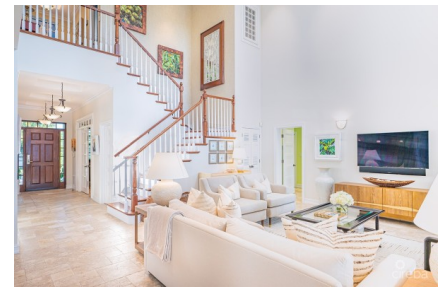


THE PARKSTONE, A SALT CREEK VILLA

Seven Mile Beach, Cayman Islands

MLS# 415936

US\$6,650,000





Sloane Rhulen
sloane@rhulens.com

the PARKSTONE Villa, a Salt Creek residence, is located in the very exclusive and sought after gated community of Salt Creek. SALT CREEK is a gated community with 24 hour manned security guard at gate, and is an intimate neighborhood of 14 exclusive homes on the shores of the North Sound. Traditional Caribbean architecture updated for family living by integrating comfortable, luxurious interiors and lush private gardens with shared open spaces that celebrate the values of community, is the ethos of Salt Creek and the PARKSTONE Villa. Delicately decorated, immaculately maintained and situated on land adjoining community green open space along with Creekside Open Water basin positioning views, the PARKSTONE Villa is the quintessential executive family residence. the PARKSTONE Villa is a 5,709 sq two story Colonial home situation on 0.32 acres with creekside water basin (canal front) 124 feet, and provides four bedrooms, three full and one half bathroom, an entrance foyer, living room, separate lounge area / office with custom wine repository, dining room, bonus room, kitchen, large utility space, covered terraces and a brand new and impeccable Outdoor Living Room and Kitchen space (1,077 sq) with electric screening and an amazing new infinity 60 foot resort style pool delivering seamless water views and unrivaled sunset colored skies throughout the year - a perfect spot for sundowners! Just magnificent and a must see to appreciate. VIDEO: <https://vimeo.com/818719521?share=copy>

Essential Information

Type	Status	MLS	Listing Type
Residential (For Sale)	Current	415936	Single Family Home

Key Details

Bed	Bath	Block	Parcel
4	3.5	10E	64H1
Year Built	Sq.Ft.		
2006	5709.00		

Additional Features

Block	Den	Lot Size	Parcel
10E	No	0.32	64H1
Views	Sea Frontage	Foundation	Furnished
Canal Front, Water Front	124	Slab	Yes
Den	Garage	Zoning	
Yes	2	Low Density residential	